

# THE PARK POST

## SPRING of 2023



### LOWER BEVERLEY LAKE PARK

William Morris, A.M.C.T., Park Manager  
146 Lower Beverley Lake Road  
P. O. Box 130  
Delta, Ontario K0E 1G0  
[www.beverleylakepark.com](http://www.beverleylakepark.com)  
[info@beverleylakepark.com](mailto:info@beverleylakepark.com)

### WELCOME TO THE 2023 CAMPING SEASON!

As I prepare this newsletter, flurries are once again coming down. It seems like Old Man Winter just doesn't want to leave the park this year. Regardless, we are now preparing for another great camping season at Lower Beverley Lake Park in Delta.

As we approach opening weekend, I would like to remind everyone of a couple of opening timelines.



- ✓ Seasonal Campers may access the park on foot to clean their lots/trailers prior to our opening, overnight stays are not permitted until May 12<sup>th</sup>.
- ✓ Weather permitting and the roads having dried up, the gates will be open for Seasonal Campers to drive to their sites during the weekend of May 6<sup>th</sup> and 7<sup>th</sup>. Remember to remain on the dry, well-travelled portions of the roadways as some areas may still be soft.
- ✓ Gate access cards will be activated on May 12<sup>th</sup>.
- ✓ Power & water will not be available until May 6<sup>th</sup>; washrooms will not be available until May 12<sup>th</sup>.
- ✓ Gate House will be open from 10:00 a.m. to 4:00 p.m. during the week of May 8<sup>th</sup>.

A copy of the 2023 park brochure and the events calendar have been included with this edition of the Park Post. We hope that you will be able to support and attend many activities this season.

## A WARM WELCOME TO OUR NEW CAMPERS

We would like to welcome the following new campers to Lower Beverley!

Site A-07            TBA  
K-00:                Heather and Doug Langdon, Toledo  
House Front 2:    Angela and James Bennett, Kemptville



## PARK MANAGEMENT BOARD

Following the municipal election in October of 2022, there were some changes to the composition of the Lower Beverley Lake Park Management Board for the 2023-2026 term of office.

During the Management Board meeting held in January, Chairperson Penny Sawyer paid tribute and gave thanks to those members who are concluding their tenure with the Board and have made significant contributions to the park.



### Photo (l-r)

*Al Moorhouse*, Seasonal Campers Liaison, 2015-2022  
*Joan Delaney*, Council Representative, 2019-2022  
*Rose Hyland*, Chairperson of the Seasonal Campers' Recreation Committee, 2018-2022  
Chairperson Penny Sawyer.

**Absent** from the photo is Vice Chairperson *Hazel Wykes*, 2011-2022.

Thank you one and all; Lower Beverley Lake Park is a better place because of your positive thoughts and combined efforts!

*Cathy Livingston* was also remembered during the January meeting. Cathy very capably served the Management Board in several capacities including the following:

- ✚ Community Representative      2007-2010
- ✚ Vice-Chairperson                2011-2013
- ✚ Chairperson                        2014-2018
- ✚ Liaison to Delta Mill Society    2019-2022

Cathy passed away on December 14<sup>th</sup>, 2022, following a brief illness. Cathy was everything Delta as she lived and breathed a love for her hometown. She embraced change and was always striving to improve the park and the greater Delta Community. Cathy was a tremendous supporter of the community; a beacon of sunshine at all events that she attended where she enjoyed visiting and sharing a laugh with all those in attendance.



**Photo**

Cathy Livingston serving cake at the park's Canada Day celebrations.

## REGISTRATION PACKAGES for NEW SEASONAL CAMPERS



Just think.... In less than a month, the park will be open, and we will be well on our way to enjoying the summer of 2023!

Upon arrival at the park, we request that all **NEW** Seasonal Campers stop at the Gate House to collect their 2023 gate passes. To facilitate the distribution of the passes, Reception Staff will be available prior to the park's opening on the following days:

- ✓ Week of May 8<sup>th</sup> between the hours of 10:00 a.m. and 4:00 p.m.

Returning Seasonal Campers may continue to use their existing gate cards to gain access to the park effective May 12<sup>th</sup>. If you know now that you have misplaced your card and will be requiring a new card for the 2023 season, call or email the park now so that a replacement card can be prepared at a cost of \$20.00 plus applicable taxes.

---

## REGISTRATION PACKAGES for ALL SEASONAL CAMPERS

Within this package, you will find a coloured sheet. Seasonal Campers are asked to complete the sheet by filing in the numbers printed on the back of your gate cards and returning it to the Gate House. It is important to complete this sheet as all cards not currently identified and recorded in our new tracking system will be turned off. Please return the form to Reception Staff prior to May 24<sup>th</sup>, 2023.



---

## PAULA'S PIZZA RETURNS !



Be sure to stop by the Canteen this season for some delicious food and mouthwatering pizza as the Antonakos family returns to Lower Beverley Lake Park. Athena, Spiros, and Paula are anxious to return to the canteen to meet new campers and renew old acquaintances. Days and hours of operation will vary until the peak camping season, but the food will always be excellent!

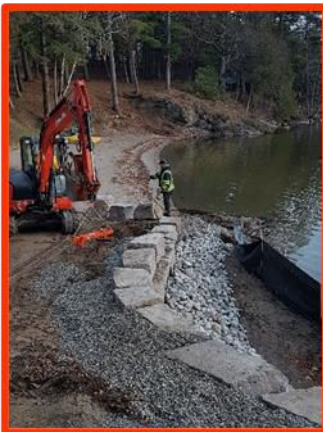




## PARK IMPROVEMENTS

Since the closure of the park for the season in October, staff have been working on various capital projects to improve our facilities once again.

- ✓ A bunkie was added to the M-Section of the park. This building will serve as a maintenance building for the water treatment equipment required for an additional well which will serve this area of the park.
- ✓ Repairs have been completed to the floors in Cottage 5.
- ✓ Upgrades have been completed in the washrooms at the Main Service Centre. Such upgrades include the painting of the ceiling, the installation of LED lights, the replacement of the existing aged toilets with raised, low volume flushing toilets and the installation of trusscore on the walls. Trusscore is a high strength ½" polymer board that is highly resistant to chemicals and unaffected by moisture. The washrooms are now very visually appealing, and it will be much easier for staff to clean during the season.
- ✓ A new exhaust system has been installed as a means of improving the ventilation in the seven showers at the Main Service Centre.
- ✓ Numerous trees have been removed because of damage from the Emerald Ash Boer; replacement trees will be transplanted by Manotick Tree Movers later in the spring.
- ✓ Supporting the civic addressing within the park, new signage was painted which will designating the various "areas". A bright orange sign with a raised white letter has been placed along the entrance points to each roadway.
- ✓ Thanks to a generous donation from the 5B Foundation, funding was provided to make our beach accessible for all campers. Once the shoreline was stabilized, a ramp and railing were installed which extends from the top of the Cottage 1 hill to the beach. A bench has been placed at the base of the ramp along with a water tap that will allow campers to wash off their feet before putting on their shoes. Wheelchair accessible picnic tables have been constructed and will be arranged to overlook the beach area. There are some minor landscaping issues which still need to be completed later this spring including the placement of topsoil and sod to cover some of the stoned areas and the placement of shrubs and benches.



Shoreline Stabilization

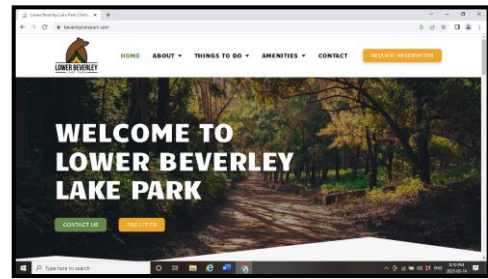
Ramp Construction



Completed Ramp

## A NEW LOOK FOR LOWER BEVERLEY

As mentioned in the October 2022 issue of the Park Post, a new park website was being constructed in preparation for the upcoming camping season. This project was completed by the staff of Imperium in Kingston with an address of [www.beverleylakepark.com](http://www.beverleylakepark.com). If you have not had a chance already, we encourage you to visit the new site.



A new logo has also been designed for the park. For the past twenty years, the Lower Beverley loon has been associated with the park and the Lake Association as well. But now, a new look has been designed for the park which blends a bear (representing our Mascot, Elbe), a tent, and a campfire. The new logo will now be used on all publications and marketing materials, signage, and park clothing.

Both the redesign of the website and the creation of a new logo are part of the Management Board's Strategic Plan, 2023-2027.

## THANK YOU, VOLUNTEERS



More than five million Ontarians volunteer each year and contribute more than 800 million annual volunteer hours in helping Ontario grow stronger. They play a significant role in building strong and diverse communities and are instrumental in the enrichment of their respective communities across the province.

Each year, the Ontario Ministry of Citizenship and Immigration recognizes such volunteers across the province through the presentation of the Ontario Volunteer Service Award. We are very fortunate to have many active volunteers within the park and the community, both past and present. While the Park Management Board would like to refer all the volunteers for recognition at once, the provincial program limits the number of nominations each year. For the 2023 season, the Management Board would like to acknowledge the contributions of the following campers:

- |                   |          |
|-------------------|----------|
| ✓ Dodd, Frank     | 20 years |
| ✓ Dodd, Sandy     | 20 years |
| ✓ Davy, Barry     | 20 years |
| ✓ Martell, Robert | 05 years |
| ✓ Ronan, Gary     | 05 years |
| ✓ Ronan, Wendy    | 05 years |



The Ministry will send the recipients an invitation to attend a gala presentation later in the year.

## THE RECREATION COMMITTEE NEEDS YOU!

We are most fortunate to have a very active and progressive Campers' Recreation Committee within the park. This group of dedicated individuals has sponsored such events as bi-weekly bingo games, karaoke, pancake breakfasts, craft / vendor sales, children's events and crafts.

Proceeds from their efforts have supported various projects within the park including the purchase of new playground equipment, upgrades to the mini-putt golf course, expansion of the Recreation Committee's storage building adjacent to the Arcade, and enhancements within the Bradford Pavilion, just to name a few.



A list of 2023 Committees has been included with this newsletter for your review. As current volunteers are aware, a volunteer membership form needs to be completed at the beginning of each new term of the municipal Council. Because a new Management Board was appointed following the 2022 municipal election, campers must now complete a new Volunteer Information form. A copy of the form has been included in this package for your completion. If you have some free time and are willing to volunteer, please contact Committee Chairperson Michaelann Wright at Site J-06. Completed forms should be returned to Reception Staff at the Gate House. Help us maintain our summer programs!

---

## BEAUTIFICATION CONTEST

The Management Board is pleased to sponsor a Beautification Contest for those patrons occupying seasonal sites. The contest will be operated in conjunction with activities sponsored by the *Delta Beautification Committee*.

Judges will be touring the park to view all sites during the week of July 10<sup>th</sup> with the results being posted at the Gate House on July 14<sup>th</sup>. The contest will be judged by representatives of the *Delta Beautification Committee*. No registration will be required.



One prize will be awarded for each of the following categories:

~Best Overall Appearance~  
~Most Unique Display or Site~

~Most Welcoming~  
~Best Use of Colour~

Each prize winner will receive a gift package containing the following 2023 coupons which must be redeemed during the current camping season:

~1 free pump-out~  
~1 bundle of campfire wood~

~1 half day canoe, boat, or kayak rental~  
~Prize certificate from the  
Delta Beautification Committee~



## MONDAY MORNING COFFEE



Be sure to stop by the United Church Hall for some coffee, donuts, and fellowship. This activity is offered every Monday morning as part of the Church's Outreach Program between the hours of 8:00 a.m. and 10:00 a.m.

There is no charge, but a free will donation is welcomed.



# DELTA FAIR

July 27<sup>th</sup> to 30<sup>th</sup>



## LAKERSFIELD LIGHTS WILL SHINE AGAIN



Members of the Management Board received notification in March that the Board was the recipient of a private donation from the William James Henderson Foundation. This generous contribution will provide the much-needed assistance to replace the aged light poles and lights at the ball diamond. Two of the poles had to be taken down last summer following damage by woodpeckers. When the two poles were removed, the light system was rendered inoperable.

THANK YOU, THANK YOU, THANK YOU!

Watch for further details as this exciting upgrade takes place!

## TREE PLANTING SUPPORTED

The Old Bastards' Vintage Motorcycle Club recently made yet another generous donation in support of the Delta Community. This time, the OB's donated to the Lower Beverley Lake Park Management. The donation will support park staff as they continue to transplant trees in the park as a replacement for those killed by the Emerald Ash Boer.

A special vote of thanks is extended to the Old Bastards' Motorcycle Club for their consideration and continued support of the park. The annual motorcycle rally will be held this fall during the week of September 8-10<sup>th</sup>.



## STORY BOARDS INSTALLED ALONG THE NATURE TRAIL



Thanks to a partnership between the Frontenac Arch Biosphere (FAB) and the Lower Beverley Lake Park Management Board, story boards have been installed along the nature trail in the park.

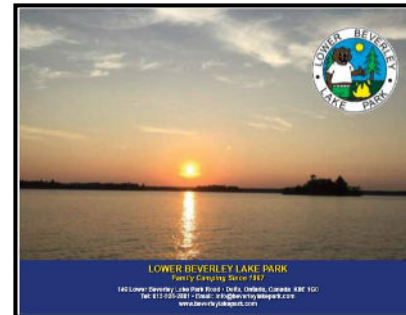
As people walk along the 2 km trail, they can read / view pages from a featured story book with the first selection being "The Snow Knows" which was written by Jennifer McGrath. The children's story book will be changed throughout the year to reflect the shifting seasons.

Enjoy the seasons at Lower Beverley Lake Park as you walk the trail. Please remember to "take only photographs and leave only your footprints".



## ACCOMPANYING THIS NEWSLETTER

- ✚ Maple Syrup Festival Brochure
- ✚ Park Brochure
- ✚ Campground Map with Park Rules
- ✚ Calendar of Park Events
- ✚ Campers' Recreation Committee List and Volunteer Enrollment Form
- ✚ Gate Card Tracking Form



*"Instilling a Passion for Our Heritage"*

Website: [www.deltamill.org](http://www.deltamill.org)

Email: [info@deltamill.org](mailto:info@deltamill.org)

May 20<sup>th</sup> - **SEASON OPENING** of the Old Stone Mill National Historic Site. The mill will be open for tours from 10:00 a.m. to 5:00 p.m. daily until Labour Day. Admission is free; donations are appreciated.

May 20<sup>th</sup>, June 3<sup>rd</sup> and 17<sup>th</sup> - **MILLING DEMONSTRATIONS**

The 200-year-old mill stones in the Old Stone Mill will start grinding heritage wheat into flour at 1:00 p.m. Come out and see how top-quality flour is made. Admission is free; donations are appreciated.

May 27<sup>th</sup> - Mary's Merry Minstrels presents **MARY'S OLD TIME COUNTRY AND GOSPEL MUSIC CONCERT** at the Old Town Hall beginning at 7:00 p.m. Admission is free with donations being greatly appreciated.



## ***BEFORE YOU BLOW YOUR BREAKER!***

Take a minute and see how many amps you could be using in your trailer. It is surprising to see how fast the amps add up which causes your trailer breaker or the park breaker to trip. By tracking the amps needed for all the electrical appliances in your trailer, you can help manage electrical use and save yourself the inconvenience of saying "My Electricity Went Out!"

Appliance	Amps Required		Appliance	Amps Required
Air Conditioner	13 - 17 amps		Refrigerator	5.7 amps
Water Heater	12.5 amps		Microwave	12.8 amps
Coffee Pot	9 amps		Toaster	10 amps
Hair Dryer	10 amps		Television	2 amps
Dirt Devil Vacuum	2 amps		Trailer Power Converter	2-3 amps
Electric Frying Pan	10 amps		Iron	10 amps
Food Processor	6 amps		Crock Pot	1.5 amps
Heating Pad	0.5 amps		1,100 Water Heater	10 amps

Be sure to check the breaker in your own trailer first before calling the Gate House.

---

## ***CAMPFIRE WOOD SALES***



Campfire wood will be available for purchase from Reception Staff at the Gate House. While face cords were available in previous years, campfire wood will only be sold by the ½ face cord this season at a cost of \$65.00.

Staff will continue to deliver the wood to the campsite when time and resources permit.

---

## ***SPRING CLEAN UP***



Just a reminder to those campers who will be in the park cleaning up their lots prior to opening day that any raked leaves need to be placed in a garbage bag and taken to the road for Maintenance Staff to collect. Similarly, garbage should be dealt with in the same manner. We regret that we are no longer able to provide garbage bags for the collection of refuse resulting from yard maintenance work.

As outlined in Schedule B to By-Law #2021-08, all proposed outdoor work and / or projects must be pre-approved by Park Management prior to any construction taking place. This includes but is not limited to the adding of soil, cutting, or planting of trees or the spreading of gravel. Anyone wishing to complete such an alteration is asked to submit their request to Reception Staff at the Gate House for consideration by Management.

## ***SITE MAINTENANCE***

Campers are not to dump their grass cuttings, twigs or sticks in the regular garbage cans as they make the bags very difficult for Staff to remove from the cans.



Small disposable green 1 lb. propane tanks should not be included in the site garbage. Please place the tanks beside the black and white checkered waste barrels.

---



### ***ATM***

For the convenience of our campers and members of the public, an automated teller machine has been installed in the Gate House.

## ***PROPANE TANK EXCHANGE PROGRAM***

We are pleased to offer a propane tank exchange for the convenience of our customers and members of the public. Empty 20-pound tanks may be exchanged for full tanks provided that the tank issuance date is not prior to 2015. Tanks with propane may also be purchased from staff at the Gate House.



### ***SPEED LIMIT REMINDER***

Campers are reminded that the maximum vehicle speed limit in the park is 15 km/hr. Please be mindful of pedestrians and children on bicycles.

This speed limit is also applicable to the motorized scooters / carts permitted for handicapped accessibility. Do not abuse this privilege.



## ***MEDICAL EMERGENCIES***



Through a partnership with the Leeds-Grenville Emergency Medical Services and the Ontario Heart and Stroke Foundation, a **defibrillator** unit remains stationed at both the **Gate House and the Snack Bar Plus Canteen**.

**First Aid Kits** are available at the **Gate House and the Snack Bar Plus Canteen**.

If you dial 911, our civic address is **146 Lower Beverley Lake Park Road, Delta**.

---

## ***POSTAL SERVICES***

Campers are reminded that they need to open a general delivery mailbox at the Delta Post Office if they are using the park's civic address for mail purposes. Park Staff cannot accept a camper's personal mail that has been addressed to the park at Box 130, Delta.



## VEHICLE PARKING and GATE CARDS

Campers are reminded that only one vehicle is permitted to be parked on each site. It is important to keep our roadways clear of additional parked vehicles and trailers.

Two proximity vehicle passes are issued to each site holder. Each pass is valid for only one vehicle. Campers who have more than one vehicle and wish to bring the additional vehicle into the park are reminded that they need to park their second vehicle in a designated parking area. Additional vehicle cards are available from Gate House staff at a cost of \$60.00.



Campers are reminded that giving their cards to non-family members to gain access to the park or opening the gates with their cards for members of the public to avoid the purchase of a daily Visitor's Pass from staff is prohibited.

Campers abusing the privilege will have their cards turned off thus requiring a stop at the Gate House each time to gain access to the park.

---

## NO FEEDING

Believe it or not, the geese have already started camping in the park and before long, we will also see the return of other wildlife. Please DO NOT feed the geese, raccoons, or skunks.

Thank you for your cooperation continued support.



With the adoption of the Cannabis Act S.C. 2018, c. 16 on October 17<sup>th</sup>, 2018, campers can anticipate exposure to the smoke fumes in the park at one time or another.

As mandated by Smoke-Free Ontario Act, *smoking or vaping tobacco or cannabis is prohibited* in all buildings and structures and within 20 meters of all sport facilities including the playground, the beach, and any sport field.

Whereas campsites are not classified as a permanent place of residence, Seasonal Campers are prohibited from growing cannabis plants on their site.

Should campers have any questions or concerns, please contact the Park Management.

---

## IF YOU NEED ASSISTANCE FROM PARK STAFF.....

In the event you have any concerns or requests pertaining to your site, please make the request to Reception Staff at the Gate House. Your request will be recorded in a log and forwarded to the appropriate staff.

We Are Ready to





## WIRELESS INTERNET



Wireless internet will once again be available to all campers within the vicinity of the Bradford Pavilion at no cost; a password is not required.

## COMMERCIAL INTERNET SERVICES

- Airmax Up to 7Mbps down/1Mbps Up available; no contract required, cancel following notice of 30 days.
- Equipment Rental includes subscriber unit to acquire service and Wi-Fi router.
- Service can be suspended/cancelled for the winter, rented equipment does not need to be returned if customer intends to reactivate the following year. If they fail to return the equipment and do not activate the following year, the customer is responsible for the full purchase price of the equipment.
- Installation: Equipment has 4 LED lights on the back that allow the customer to aim it at the tower themselves and it will work at full speed if they can activate all 4 LEDs. If they require professional installation, it can be scheduled by appointment.
- Equipment can be picked up at 'JoeComputer' in Spencerville or during the weekends at Taira Lovegrove's campsite (K-07). She is not an installer but can provide a pickup option locally.
- Service can only be activated with a preauthorized payment of a VOID cheque or Credit Card number. Monthly service is billed at the beginning of each month.
- Additional information is available by contacting the following:  
Joe Moulton, MCSE  
[joe@joecomputer.ca](mailto:joe@joecomputer.ca)  
<http://www.joecomputer.ca>  
613-658-2314



**Please note that this service is NOT provided by  
Lower Beverley Lake Park.  
Any/all issues related to installation, service and  
payment are to be directed to the provider.**



## FINAL INSTALLMENT

Just a reminder that the final installment for the 2023 camping season will be processed on Friday, May 12<sup>th</sup>.

2024 renewal packages will be available for pick-up from Reception Staff at the Gate House on August 1<sup>st</sup>.



## LIQUID WASTE COLLECTION



Three days have been scheduled for the **collection of liquid waste** which include

- ✓ Tuesday (Areas A to F)
- ✓ Wednesday (Areas G to I-13)
- ✓ Thursday (Areas I-14 to 16, J, K, M and all remaining)

**REQUEST YOUR PUMPOUT BEFORE THE DAY OF SERVICE.  
IF YOUR REQUEST IS SUBMITTED AFTER STAFF HAVE COMPLETED PUMPING,  
EMERGENCY PUMPOUT RATES WILL BE CHARGED.**



**Discount programs** for the pumping of liquid waste can be purchased at the Gate House. While single pump out fees are \$25.00 per load, discount packages are available for pump outs for the entire season along with increments of five and ten.

Pump outs are not transferable and must be used in the current year.

Quantity of Pump Outs	Package Price	Savings to the Camper from a Single Pump Out
1	\$25.00	0
5	\$110.00	\$15.00
10	\$200.00	\$50.00
Seasonal Package of 22	\$350.00	\$200.00



Reception Staff will maintain a log of the package selected and the redemption dates.

Just a reminder that the **discharging of grey water onto the ground is strictly prohibited**. Grey water is defined as water, with any additions that is disposed of on a regular basis and that originates from showers, laundry and kitchen/washroom sinks. Campers must ensure that all septic hoses are attached and secure.

---

## RECYCLING PROGRAM

To further promote and support the municipal waste recycling program, a recycling depot will be maintained at the Maintenance Yard in the park.

Collection will be offered to our Seasonal Campers every Sunday provided that the recycling is sorted and bagged accordingly before noon. Please ensure that your recyclables are placed next to the garbage barrels before noon on Sunday. Campers are welcome to personally deliver their recycling to the bins.

Campers are required to deliver any construction type materials to the Maintenance Yard.

## ITEMS THAT ARE NO LONGER RECYCLEABLE

- ✱ Heavily waxed / coated boxes (milk cartons), shiny / sparkly gift bags, mixed content containers with both cardboard & metal (Pringle chip tubes/coffee canisters), dirty paper products (tissues/serviettes).
- ✱ Plastics that are black in colour, utensils, straws, hard rigid packaging, make-up containers, hoses, shelving, totes, bubble wrap, hangers, laundry baskets, ornaments/decorations, toothpaste tubes, razors, feminine product wrappers, pill packs for medication, cellophane wrap, coffee pods, granola bar/candy/chocolate bar wrappers, grocery bags, milk bags, Ziploc bags, plastic wrap from cheese, cold meats, fruits & vegetables.



## GROUP ONE RECYCLABLES

## PLASTICS #1 to #5, METAL AND GLASS BOTTLES / JARS

All recycling must be clean. Liquids and food are not recyclable.

Please ensure all recycling containers are rinsed and clean.



## METAL and ALUMINUM

Clean aluminum food trays (pie plates, take out, etc.)

Clean aluminum foil (no food debris)

Clean metal & aluminum cans (soup, pasta, soft drink, energy drink)

Canned meat

Canned vegetables

Pet food containers

## GLASS BOTTLES & JARS

LIDS MUST BE REMOVED

Pickle / Olive Jars

Jam / Cheez Whiz Jars

Salsa / Sause Jars

## GROUP TWO RECYCLABLES

## PAPER, CARDBOARD AND BOXBOARD



## EXAMPLES OF GARBAGE

