

THE PARK POST

SPRING of 2025



LOWER BEVERLEY LAKE PARK

William Morris, A.M.C.T., Park Manager
146 Lower Beverley Lake Road
P. O. Box 130
Delta, Ontario K0E 1G0
www.beverleylakepark.com
info@beverleylakepark.com

WELCOME to the 2025 CAMPING SEASON!

Welcome back to another exciting camping season at Lower Beverley Lake Park! We are thrilled to have you join us once again to enjoy the beauty and tranquility of our park, and we are excited to make this season a memorable one for everyone.

As always, our staff has been working hard to ensure that the park is in pristine condition, with clean facilities, well-maintained campsites, and a variety of activities for all ages to enjoy. From walking trails, wagon rides, fishing, and special events, there's something for everyone to experience this season. We encourage you to take part in our scheduled activities, connect with fellow campers, and create lasting memories. If there's anything we can do to make your stay more enjoyable, please don't hesitate to reach out to our friendly staff.

As you prepare for your upcoming stay, we want to provide you with some essential information to make your experience at Lower Beverley Park truly exceptional this year.

- While Seasonal Campers may access the park on foot to clean their lots/trailers prior to our opening, overnight stays are not permitted until May 9th. Vehicle access may also be available earlier depending upon road and weather conditions; please remember to remain on the dry, well-travelled portions of the roadways as some areas may still be soft.
- Power and water will not be available at your site until May 2nd; drinking water and washrooms / showers will not be available until May 9th.

Thank you for choosing Lower Beverley Lake Park as your camping destination. We look forward to sharing another fantastic season with you!

Happy Camping!

INSIDE THIS MONTH

- ✓ Park Post-Spring 25
- ✓ Brochure and Map
- ✓ Syrup Festival Info
- ✓ Calendar of Events
- ✓ Recreation Committee List and Application
- ✓ Ice Breaker Invitation

REGISTRATION PACKAGES for NEW SEASONAL CAMPERS

Just think.... In less than a month, the park will be open, and we will be well on our way to enjoying the summer of 2025!



The park will be open to public occupancy between Friday, May 9th and Monday, October 13th.

Upon arrival at the park, we request that all **NEW** Seasonal Campers stop at the Gate House to collect their 2025 gate passes. To facilitate the distribution of the passes, Reception Staff will be available prior to the park's opening on the following days:

May 5th to 8th between the hours of 10:00 a.m. and 4:00 p.m.

Returning Seasonal Campers may continue to use their existing gate cards to gain access to the park effective May 2nd. If you know that you have misplaced your card and will be requiring a new card for the 2025 season, call or email the park now so that a replacement card can be prepared for you at a cost of \$25.00 plus applicable taxes.

2025 EVENTS for the ENTIRE FAMILY!

Date	Event	Time
May 16	Karaoke	7:30 p.m.
May 17	Kid's Bingo	11:00 a.m.
May 17	Bingo	7:00 p.m.
May 18	Entertainment: Doherty Brothers	1:00 p.m.
May 31	Entertainment: Crossing Borders	1:00 p.m.

June 7	Kid's Crafts	11:00 a.m.
June 7	Seasonal Campers' Ice Breaker Pot-Luck Supper Entertainment: Jim Patterson & The Ride	4:30 p.m. 6:00 p.m.-10:00 p.m.
June 13	Karaoke	7:30 p.m.
June 14	Children's Activities: Mini Putt Tournament	11:00 a.m.
June 14	Entertainment: Cadillac Rumble	1:00 p.m.
June 27	Karaoke	7:30 p.m.
June 28	Horseshoe Tournament	9:00 a.m.
June 28	Kid's Bingo	11:00 a.m.
June 28	Entertainment: Texas Tuxedo	1:00 p.m.
June 28	Bingo	7:00 p.m.
June 29	Children's Activities: Easter Theme	11:00 a.m.
June 29	Entertainment: Switch Gear	1:00 p.m.

**MESSAGE from Penny Sawyer
PARK BOARD CHAIRPERSON**

Welcome to the 2025 camping season! We are thrilled to have you back and are looking forward to another memorable summer shared with family and filled with adventure, laughter, and cherished memories.

As we embark on this new season, we eagerly anticipate renewing old acquaintances and forging new friendships within our tight-knit community. Your presence as seasonal campers is not only cherished within our park but also holds significant importance within the Delta community at large.

Throughout the years, you have become an integral part of our community, contributing to the enhancement of lifestyles, and fostering a sense of belonging among fellow campers and residents alike. Your dedication and enthusiasm have not gone unnoticed, and we are immensely grateful for the positive impact you continue to make.

Moreover, your role as volunteers at the numerous events hosted within the park is invaluable to its success. Your unwavering support and willingness to lend a helping hand embody the spirit of camaraderie and teamwork that defines our park community.

As we embark on this new season together, let us celebrate the bonds we share and the adventures that await us. May this summer be filled with joy, laughter, and countless memories that we will cherish for years to come.

Welcome back, campers! Here's to another incredible camping season ahead.

PARK MANAGEMENT BOARD

The following individuals have been reaffirmed as Members of the Lower Beverley Lake Park Management Board for the 2023-2026 term of municipal office. We thank them for their interest in and commitment to our park.

 <p>Penny Sawyer Chairperson Community Representative</p>	 <p>Betty Anne Nolan Community Representative</p>
 <p>Brent Rathwell Community Representative</p>	 <p>Darrell Halladay Liaison to the Seasonal Campers</p>
 <p>Arie Hoogenboom Mayor Township of Rideau Lakes <i>(Currently on-leave at the time of printing this newsletter)</i></p>	 <p>Sue Dunfield Councillor Township of Rideau Lakes</p>



Since the park's closure for the season in October 2024, we have learned of the passing of members of yesteryear's Lower Beverley family. Sincere condolences are extended to all family members and friends.



Francis (Fran) White passed away on November 25th, 2024, with the ones who loved him immensely by his side at the Heart Institute. He is survived by his long-time devoted friend Julie Beauregard, his stepchildren Micheal Beauregard (Jenna), Alisha Noccey (Scott) and his grandchildren Emerson and Elianna. Fran fought a lengthy battle with heart disease for many years.



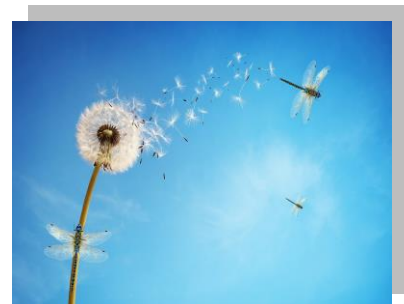
Sharon Barr passed peacefully on February 19th, 2025 at Brockville General Hospital at the age of 70. Sharon will be deeply missed by her daughter, Ashley Barr (Neil Norman), and granddaughter, Everly Harper-Barr. She was predeceased by her beloved husband, James William Barr,



It's with heavy hearts that we announce the passing of **Patrick Joseph (Joe) Hickey** peacefully in the Brockville Palliative Care Unit on February 4th, 2025. Joe recently moved to Brockville after spending several decades living in Delta. In his 84th year, he was the beloved husband of the late Martha (Burkholder) and the loving father of Tricia (Kevin Long), Marcia (Andrew Froats) and Joanne (Michael Hurst).

Joe was employed at the park in the 1980's and 1990's under the management of Bud Donald and Pat Matthew. As part of municipal amalgamation in 1998, Joe transferred to the Municipal Properties Department in Chantry but returned each year to help during the Celebrating the Season Christmas lights program.

Sadly, some people are meant to stay longer in our memories than in our lives.



THANK YOU, VOLUNTEERS

More than five million Ontarians volunteer each year and contribute more than 800 million annual volunteer hours in helping Ontario grow stronger. They play a significant role in building strong and diverse communities and are instrumental in the enrichment of their respective communities across the province.



Each year, the Ontario Ministry of Citizenship and Immigration recognizes such volunteers across the province through the presentation of the Ontario Volunteer Service Award. We are very fortunate to have many active volunteers within the park and the community, both past and present. While the Park Management Board would like to refer all the volunteers for recognition at once, the provincial program limits the number of nominations each year. For the 2025 season, the Management Board would like to acknowledge the contributions of the following campers:

Trudy Primeau with 5 Years
Willie Primeau with 5 Years
Tony Lovegrove with 10 Years

Wendy Lovegrove with 10 Years
Marie Sudds with 20 Years
Nancy Van Schie with 20 Years

THANK YOU for a JOB WELL DONE!

Michaelann Wright, Past Chairperson of the Seasonal Campers' Recreation Committee, was recognized by Members of the Park Management Board on January 28th, 2025, for all her recent contributions to life within the park. Michaelann served the park community as the Vice-Chairperson of the Seasonal Campers' Recreation Committee from 2018 to 2022 and then Chairperson in 2023 and 2024. Michaelann's commitment to ensuring our park was filled with exciting and enriching activities throughout the summer truly made a difference. Everything from monthly bingos to craft / vendor events to memorial garden maintenance, her creative vision and tireless efforts brought joy to countless campers and their families.



Photo: Seasonal Campers' Liaison Darrell Halladay (l), Michaelann Wright (centre) and Penny Sawyer, Chairperson of the Management Board (r).

Joyce Morely was also recognized by Members of the Park Management Board for a commitment to the Seasonal Campers Recreation Committee that spanned two decades. Joyce served as Assistant to the Treasurer from 2004 to 2008 and then Treasurer from 2009 to 2024. Her unwavering commitment and meticulous stewardship of the finances were invaluable in keeping all Recreation Committee programs running smoothly and successfully.

Beyond Joyce's role as treasurer, her contributions to the children's events program, but especially the kid's bingo games, were truly remarkable. Joyce's enthusiasm, patience, and creativity brought joy to countless children, creating memories that will last a lifetime.

Both Michaelann and Joyce received a winter jacket bearing the new park logo as a token of appreciation from the Management Board. Thank you both for the job well done!

RECREATION COMMITTEE NEEDS YOU!



We are most fortunate to have a very active and progressive Campers' Recreation Committee within the park. This group of dedicated individuals has sponsored such events as bi-weekly bingos, karaoke, pancake breakfasts, craft / vendor sales, children's events, and crafts.

Proceeds from their efforts have supported various projects within the park including the purchase of playground equipment, circulation fans for the Bradford Pavilion, the expansion of the Recreation Committee's storage building adjacent to the Arcade, and the pending new children's arcade.

A list of 2025 Committees has been included with this newsletter for your review. If you have some free time and are willing to volunteer, please contact one of the following members of the Campers' Recreation Committee Executive:

- | | | |
|-------------------|-----------|---|
| ✓ Sean Barrer | Site I-12 | Email: sean.barrer@gmail.com |
| ✓ Ron Kessler | Site A-31 | Email: kessellers@sympatico.ca |
| ✓ Jennifer Barrer | Site I-12 | Email: jen.barrer17@gmail.com |
| ✓ Marie Sudds | Site I-13 | Email: mariesudds123@gmail.com |

Any new volunteers are required to complete a registration form which has been enclosed within this package and returned to Reception Staff at the Gate House. Help us maintain our summer programs!

MESSAGE from Sean Barrer, Chairperson **CAMPERS' RECREATION COMMITTEE**

I hope this message finds you well and full of excitement as we embark on another wonderful camping season together! As the newly elected Chairperson of the Campers' Recreation Committee, I am thrilled to have the opportunity to work alongside such a vibrant and dedicated community.

Lower Beverley Lake Park thrives because of the incredible spirit and enthusiasm that each of you brings. I want to take a moment to express my heartfelt gratitude for all the time, effort, and passion all our current volunteers dedicate to our community. Your hard work and enthusiasm in organizing activities and events have brought joy to many, fostering a spirit of connection and engagement among residents.

To our non-members, volunteering is a fantastic way to share that spirit with one another and to enhance our collective experience. Whether you have a passion for organizing events, maintaining our beautiful grounds, or simply want to lend a helping hand, there's a role for everyone.

Let's come together to make this camping season unforgettable. If you're interested in volunteering or have any questions, please feel free to reach out to me directly. I look forward to seeing you around the campsite and working together to create an amazing experience for all.

Warm regards.

WHAT IS MOTHER'S DAY?

Celebrations of mothers can be traced back to the ancient Greeks and Romans, who held festivals in honor of the mother goddesses Rhea and Cybele, but the clearest modern precedent for Mother's Day is the early Christian festival known as "Mothering Sunday."

Once a major tradition in the United Kingdom and parts of Europe, this celebration fell on the fourth Sunday in Lent and was originally seen as a time when the faithful would return to their "mother church", the main church in the vicinity of their home for a special service.

Over time the Mothering Sunday tradition shifted into a more secular holiday, and children would present their mothers with flowers and other tokens of appreciation.



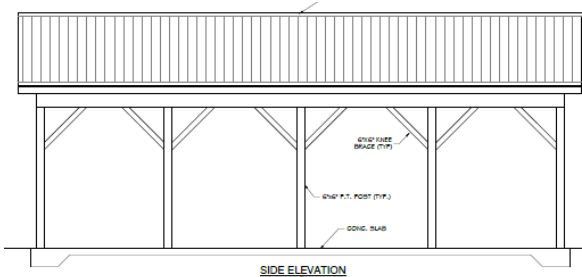
Source: History.com

PARK IMPROVEMENTS

Since the closure of the park for the season in October, staff have been working on various projects that will improve our facilities once again.

- ✓ Numerous trees have been removed because of damage from the Emerald Ash Boer; replacement trees will be transplanted by Manotick Tree Movers later in the spring.
- ✓ The horseshoe pits have been reconstructed and relocated.
- ✓ Dead trees and over-grown shrubs were removed from the ball diamond area.
- ✓ 45 new picnic tables have been constructed to replace the ageing stock.
- ✓ New docks have been constructed for placement at the mouth of the creek (Cottage 8).
- ✓ New 30-amp electrical and water services will soon be installed within the B-Section.
- ✓ Bunkie 3 has been relocated onto Site B-20.
- ✓ Water treatment equipment has been replaced.
- ✓ Aged signage has been replaced at various locations within the park and a new map of Lower Beverley Lake has been installed at the Beach Storage Building adjacent to Cottage 2.

Plans are in place to construct a 20' x 30' children's activity pavilion adjacent to the Bradford Pavilion. ELBE'S PLACE is being constructed through a partnership between the Campers' Recreation Committee and the Park Management Board. While the new pavilion



was to be constructed in the fall of 2024, unforeseen circumstances delayed the issuance of the building permit. Unfortunately, because of the weather conditions and the workload for staff in opening the park, the pavilion will not be erected until mid-September. We thank you for your patience and understanding.

PAULA'S PIZZA RETURNS!

Be sure to stop by the Canteen this season for some delicious food and mouthwatering pizza as the Antonakos family returns to Lower Beverley Lake Park. Athena, Spiros, and Paula are anxious to return to the canteen to meet new campers and renew old acquaintances.



Days and hours of operation will vary until the peak camping season, but the food will always be excellent! Feel free to order from the Canteen in advance as take-out orders are available by calling 613-928-0291. Menus will be available at the Canteen and the Gate House.

ICE CREAM FLAVOURS.....CAN YOU FIND YOUR FAVOURITE?

O	T	U	N	L	A	W	E	L	P	A	M
D	C	O	T	T	O	N	C	A	N	D	Y
A	H	O	K	E	Y	P	O	K	E	Y	D
N	M	N	O	T	R	E	E	S	E	S	A
R	O	V	E	K	U	A	U	A	T	L	O
O	O	G	A	T	I	N	N	E	E	D	R
T	S	R	N	N	A	E	O	E	W	O	Y
E	E	E	A	A	I	L	D	C	A	I	K
L	T	E	N	F	C	L	O	O	O	P	C
P	R	N	A	U	A	E	L	C	U	C	O
I	A	T	N	D	T	T	P	A	O	G	R
R	C	E	A	G	M	R	C	C	U	H	H
T	K	A	B	E	O	F	A	Y	N	T	C
R	S	T	R	A	W	B	E	R	R	Y	K

VANILLA
REESES
COOKIE DOUGH
HOKEY POKEY

CHOCOLATE
PECAN
MAPLE WALNUT
ROCKY ROAD

STRAWBERRY
FUDGE
COCONUT
BANANA

MOOSE TRACKS
TRIPLE TORNADO
COTTON CANDY
GREEN TEA

STRATEGIC PLAN, 2025-2029

The Lower Beverley Lake Park Management Board conducted a Special Meeting on September 24th, 2024, at the Delta Fair Office for the purpose of drafting a Strategic Plan for the period 2025-2029.

Members in attendance included Chairperson Penny Sawyer, Community Representatives Betty Anne Nolan and Brent Rathwell, Councillor Susan Dunfield, and Seasonal Camper Liaison Darrell Halladay along with Park Manager William Morris and Secretary-Treasurer David Schur.

The following plan was subsequently adopted by the Management Board.

MISSION
To build and strengthen our community by bringing families and resources together in a seasonal destination of choice that is affordable to all.
VISION
To enrich the lives of families in a natural environment.
VALUES
<p>Fun-Creating and encouraging happiness.</p> <p>Integrity-Demonstrating honesty and fairness at all times.</p> <p>Respect-Recognizing and protecting the inherent worth of every person including oneself.</p> <p>Responsibility-Being dependable and accountable for choices, actions, and commitments.</p> <p>Inclusiveness-Fostering a sense of belonging for all.</p> <p>Diversity-Appreciating each person’s unique qualities.</p> <p>Awareness-Protect the natural environment through conservation and sustainable practices.</p>

STRATEGIC PILLARS		
OPERATIONAL OPTIMIZATION	ECONOMIC DEVELOPMENT	COMMUNITY PARTNERSHIPS
<ul style="list-style-type: none"> ✓ Maintain a Succession and Retention Plan. ✓ Create a Cross-Training Program for staff. ✓ Conduct a Needs Assessment to determine the potential for upgrades. ✓ Maintain a Maintenance and Facilities Master Plan. ✓ Enhance existing marketing and advertising programs. 	<ul style="list-style-type: none"> ✓ Develop an Infrastructure Strategy to Align with Municipal Management. ✓ Research Summer Day Camp programs. ✓ Create an Indigenous, Cultural and Heritage Site Plan as an addition to the park. ✓ Continue to access grants and programs in collaboration with the municipality to increase the development of the park and its programs. ✓ Further investigate options for increased connectivity. 	<ul style="list-style-type: none"> ✓ Continue to foster youth volunteer engagement. ✓ Expand partnerships within the community while maintaining existing programs. ✓ Engage Indigenous and Community Partners to develop a plan for honouring the heritage of the park. ✓ Liaise with municipal resources to create a proposal writing partnership.

BEAUTIFICATION CONTEST



The Management Board is pleased to sponsor a Beautification Contest for those patrons occupying seasonal sites.

Judges will be touring the park to view all sites during the week of July 7th with the results being posted at the Gate House on July 11th. No registration will be required.

One prize will be awarded for each of the following categories:

- ❖ Best use of Colour
- ❖ Most Improved
- ❖ Best Overall Appearance



Each prize winner will receive a gift package and a certificate.

SWIMMING LESSONS *in the PARK*

Due to low enrollment during the summer of 2024, swimming lessons will not be offered in the park this summer.



Apologies are extended to all those impacted by the program's cancellation. Information regarding lessons at other locations within Rideau Lakes can be found online at www.rideaulakes.ca.

BEFORE YOU BLOW YOUR BREAKER!



Take a minute and see how many amps you could be using in your trailer. It is surprising to see how fast the amps add up which causes your trailer breaker or the park breaker to trip. By tracking the amps needed for all the electrical appliances in your trailer, you can help manage electrical use and save yourself the inconvenience of saying "My Electricity Went Out!"

Appliance	Amps Required		Appliance	Amps Required
Air Conditioner	13 - 17 amps		Refrigerator	5.7 amps
Water Heater	12.5 amps		Microwave	12.8 amps
Coffee Pot	9 amps		Toaster	10 amps
Hair Dryer	10 amps		Television	2 amps
Dirt Devil Vacuum	2 amps		Trailer Power Converter	2-3 amps
Electric Frying Pan	10 amps		Iron	10 amps
Food Processor	6 amps		Crock Pot	1.5 amps
Heating Pad	0.5 amps		Water Heater	10 amps

Be sure to check the breaker in your own trailer first before calling the Gate House.

STREET SIGNAGE

As part of the in-park beautification program, names were assigned to the roadways within the park. Except for one, all roadways were named after historically prominent people and places within the Delta Community.



- ❖ Abel Drive Named after Elder Abel Stevens / founder of Delta in 1790.
- ❖ Bell Drive Named after William Bell / operator of Bell's Store in 1850.
- ❖ Copeland Drive Named after Joel Copeland / village pharmacist in 1890.
- ❖ Denaut Drive Named after Walter Denaut / postmaster / tax collector in 1830.
- ❖ Eli Drive Named after Eli Holmes / prominent farmer in 1851.
- ❖ Flood Drive Named after Flood's Hotel / hotel on King Street in 1900.
- ❖ Godkin Drive Named after Eliza Jane Godkin, schoolteacher in 1900.
- ❖ Hastings Drive Named after Hastings Steel / last operator of the Mill in 1961.
- ❖ Irwin Drive Named after Lloyd Irwin / prominent businessman in 1900's.
- ❖ Jubilee Drive Named after Jubilee business block / built in 1897 to honour Queen Victoria's Jubilee.

- ❖ Jones Drive Named after Will Jones / built the current Stone Mill in 1811.
- ❖ Knowlton Drive Named after John Knowlton who constructed the United Church.
- ❖ LeClaire Drive Named after John LeClaire / original owner of Blackjack Island.
- ❖ Morris Drive Named after Hon. W. J. Morris / first warden of the District of Johnstown (predecessor to Counties of Leeds-Grenville) in 1842.

- ❖ Nicholas Drive Named after Nicholas Miller, owner of the first Delta Mill in 1798.
- ❖ Russell Drive Named after Harold Russell / founder of the Delta Maple Syrup Festival in 1967.

- ❖ Primrose Drive Well, just because.....



- ❖ Flood Drive was named after Flood's Hotel which was located on King Street in 1900. It was destroyed by fire in 1937.



- ❖ Jubilee Drive was named after the Jubilee business block that was built in 1897 to honour Queen Victoria's Jubilee.



- ❖ Russell Drive was named after Harold Russell as the founder of the Delta's Maple Syrup Festival in 1967.

DANGERS OF CARBON MONOXIDE POISONING WHILE CAMPING

What Is Carbon Monoxide Poisoning?

Carbon monoxide (CO) is emitted when fuel, such as natural gas or propane, is burned. It is odorless and colorless, virtually impossible to detect. CO reduces the blood stream's ability to hold oxygen. Low levels of oxygen in the body can make you faint and cause the bodily systems to stop functioning properly. In serious cases of carbon monoxide poisoning, the body can shut down completely.



Camping usually involves a tent, camper or RV. When combustibles are used within these enclosed quarters without proper ventilation, people in proximity are at high risk of carbon monoxide poisoning. Lanterns, space heaters, portable grills, gas burning appliances, and other fuel-powered equipment should only be lit and burnt outside.

Symptoms of Carbon Monoxide Poisoning

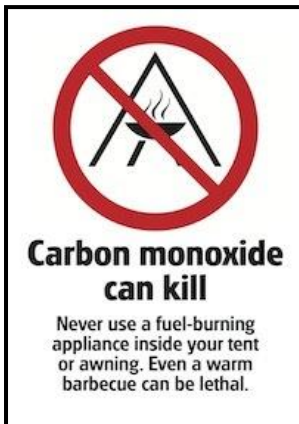
Because the symptoms of carbon monoxide poisoning resemble those of the common cold or flu, they are often initially ignored. Immediate attention should be paid to someone who has been exposed to CO emission and displays the following signs and/or complaints:

- headaches
- dizziness
- weakness / excessive sleepiness
- nausea and/or vomiting
- general confusion

Treatment

The key is to respond quickly. Turn off the appliance and open doors and windows to ventilate the area thoroughly. Call 911 immediately if you suspect that any of the above-mentioned symptoms might be due to an exposure to carbon monoxide.

How to Avoid or Reduce the Risk



Adequate ventilation in your tent, camper, RV, or any other enclosed area is important. When using gas burning units such as the portable stove in your RV, or gas lanterns in your tent, a conscious effort should be made to keep the door or windows open.

Camping in cold weather is especially dangerous for carbon monoxide poisoning because there is a frequent need for heating units and a strong tendency to stay inside due to the weather.

Enjoy your time camping by being aware of the dangers of carbon monoxide poisoning. Limit the risk to ensure that your family and friends are safe.



NEW SEPTIC PUMPING PROGRAM

The start of the 2025 camping season brings about changes to the septic pumping program. As announced this time last year, each seasonal camper will receive ten pump outs that can be used anytime throughout the season.

Staff will continue to conduct regular septic pumping sessions throughout the camping season to maintain optimal performance and to prevent any issues with trailer systems. As in past years, requests for pump outs must be made through Reception Staff at the Gate House. Staff will maintain a logbook and record the date on which a pump out was claimed.

The discounted fee for the ten pump outs has already been paid as it was included in the 2025 seasonal site payment. Should campers require more than the allotted number of pump outs, additional pump outs will be available for purchase at the Gate House. Pump outs are not transferable.

Three days have been scheduled for the **collection of liquid waste.**

- ✓ Tuesday (Areas A to F)
- ✓ Wednesday (Areas G to I-13)
- ✓ Thursday (Areas I-14 to 16, J, K, M and all remaining)



**REQUEST YOUR PUMPOUT BEFORE THE DAY OF SERVICE.
IF YOUR REQUEST IS SUBMITTED AFTER STAFF HAVE COMPLETED PUMPING,
EMERGENCY PUMPOUT RATES WILL BE CHARGED.**

Discount programs for the pumping of liquid waste can be purchased at the Gate House. While single pump out fees are \$25.00 per load, discount packages are available for pump outs for the entire season along with increments of five and twelve. Pump outs are not transferable and must be used in the current year.

Quantity of Pump Outs	Package Price		Savings to the Camper from a Single Pump Out
1	\$25.00		0
5	\$100.00		\$20.00
12	\$150.00		\$150.00

Just a reminder that the **discharging of grey water onto the ground is strictly prohibited.** Grey water is defined as water, with any additions that is disposed of on a regular basis and that originates from showers, laundry, and kitchen/washroom sinks. Campers must ensure that all septic hoses are attached and secure.

Garbage is to be placed in clear bags and stored in the closest black and white checkered barrel. Garbage will be collected daily.



DELTA FAIR

July 24th - 27th

www.deltafair.com



SPRING CLEAN UP



Just a reminder to all campers who will be in the park cleaning up their lots prior to opening day that any raked leaves need to be placed in a garbage bag and taken to the road for Maintenance Staff to collect. Similarly, garbage should be dealt with in the same manner. We regret that we are no longer able to provide garbage bags for the collection of refuse resulting from yard maintenance work.

DO NOT BLOW or RAKE LEAVES ACROSS THE ROAD ONTO ANOTHER SITE.

As outlined in Schedule B to By-Law #2023-08, all proposed outdoor work and / or projects must be pre-approved by Park Management prior to any construction taking place. This includes but is not limited to the adding of soil, cutting, or planting of trees or the spreading of gravel. Anyone wishing to complete such an alteration is asked to submit their request to Gate House Reception Staff for consideration by Management.

SITE MAINTENANCE

Campers are not to dump their grass cuttings, twigs or sticks in the regular garbage cans as they make the bags very difficult to maintain and remove from the cans.



Small disposable green 1 lb. propane tanks should not be included in the site garbage. Please place the tanks beside the black and white checkered waste barrels.

RECYCLING PROGRAM

To further promote and support the municipal waste recycling program, a recycling depot will be maintained at the Maintenance Yard in the park.

Collection will be offered to our Seasonal Campers every Sunday provided that the recycling is sorted and bagged accordingly before noon. Please ensure that your recyclables are placed next to the garbage barrels before noon on Sunday. Campers are welcome to personally deliver their recycling to the bins.

Campers are required to deliver any construction type of materials to the Maintenance Yard.

ITEMS THAT ARE NO LONGER RECYCLEABLE



- ✘ Heavily waxed / coated boxes (milk cartons), shiny / sparkly gift bags, mixed content containers with both cardboard & metal (Pringle chip tubes/coffee canisters), dirty paper products (tissues/serviettes).
- ✘ Plastics that are black in colour, utensils, straws, hard rigid packaging, make-up containers, hoses, shelving, totes, bubble wrap, hangers, laundry baskets, ornaments/decorations, toothpaste tubes, razors, feminine product wrappers, pill packs for medication, cellophane wrap, coffee pods, granola bar/candy/chocolate bar wrappers, grocery bags, milk bags, Ziploc bags, plastic wrap from cheese, cold meats, fruits & vegetables.

GROUP ONE RECYCLABLES

PLASTICS #1 to #5, METAL & GLASS BOTTLES / JARS

All recycling must be clean. Liquids and food are not recyclable.

Please ensure all recycling containers are rinsed and clean.



METAL and ALUMINUM

Clean aluminum food trays (pie plates, take out, etc.)

Clean aluminum foil (no food debris)

Clean metal & aluminum cans (soup, pasta, soft drink, energy drink)

Canned meat

Canned vegetables

Pet food containers

GLASS BOTTLES & JARS

LIDS MUST BE REMOVED

Pickle / Olive Jars

Jam / Cheez Whiz Jars

Salsa / Sause Jars

GROUP TWO RECYCLABLES

PAPER, CARDBOARD & BOXBOARD



GARBAGE



CAMPFIRE WOOD SALES



Campfire wood will be available for purchase from Reception Staff at the Gate House. While face cords were available in previous years, campfire wood will only be sold by the ½ face cord this season at a cost of \$65.00.

Staff will continue to deliver the wood to the campsite when time and resources permit.

VEHICLE PARKING *and* GATE CARDS

Campers are reminded that only one vehicle is permitted to be parked on each site. It is important to keep our roadways clear of additional parked vehicles and trailers.

Two proximity vehicle passes are issued to each site holder. Each pass is valid for only one vehicle. Campers who have more than one vehicle and wish to bring the additional vehicle into the park are reminded that they need to park their second vehicle in a designated parking area. Additional vehicle cards, which must be renewed annually, are available from Gate House staff at a cost of \$60.00.



Please remember that giving your gate cards to non-family members to gain access to the park or opening the gates with their cards for members of the public to avoid the purchase of a daily Visitor's Pass from staff is prohibited.

Campers abusing the privilege will have their cards turned off thus requiring a stop at the Gate House each time to gain access to the park.



REMEMBERING RULES *for the ROAD*



The maximum vehicle speed limit in the park is 15 km/hr. Please be mindful of pedestrians and children on bicycles.

This speed limit is also applicable to motorized scooters / carts permitted for handicapped accessibility. Do not abuse this privilege.



Children should wear their helmets while riding their bicycles.



POSTAL SERVICES



Campers need to open a general delivery mailbox at the Delta Post Office if they are using the park's civic address for mail purposes. Staff cannot accept a camper's personal mail that has been mailed directly to the park at P. O. Box 130, Delta so it will be returned to the sender.



ATM

For the convenience of our campers and members of the public, an automated teller machine has been installed in the Gate House.

PROPANE TANK EXCHANGE PROGRAM

We are pleased to once again offer a propane tank exchange. Empty 20-pound tanks may be exchanged for full tanks provided that the tank issuance date is not prior to 2017. Tanks with propane may also be purchased from staff at the Gate House.



MEDICAL EMERGENCIES

Through a partnership with the Leeds-Grenville Emergency Medical Services and the Ontario Heart and Stroke Foundation, a **defibrillator** unit remains stationed at both the **Gate House and Snack Bar Plus Canteen**. Park staff members have been trained in the operation of these units.



First Aid Kits are available at the Gate House, Snack Bar Plus Canteen, Lakersfield Ball Canteen, and the Maintenance Workshop.

If you dial 911, our civic address is **146 Lower Beverley Lake Park Road, Delta.**



With the adoption of the Cannabis Act S.C. 2018, c. 16 on October 17th, 2018, campers can anticipate exposure to the smoke fumes in the park at one time or another.

As mandated by **SMOKE-FREE ONTARIO ACT**, *smoking or vaping tobacco or cannabis is prohibited* in all buildings and structures and within 20 meters of all sport facilities including the playground, the beach, and any sport field.

Whereas campsites are not classified as a permanent place of residence, Seasonal Campers are prohibited from growing cannabis plants on their site.

Should campers have any questions or concerns, please contact the Park Management.

NO FEEDING

Believe it or not, some of our seasonal geese braved the cold winter temperatures to camp in the park. Many of their families and friends will soon return along with other wildlife. Please **DO NOT** feed the geese, raccoons, or skunks.

Thank you for your cooperation continued support.



**2025 Seasonal Campers
Lower Beverley Lake Park, Delta**

As of March 1st, 2025

Site	Site Holder
------	-------------

A-06*	Hurdis, Amanda / Duberville, Les
A-07*	Moore, Sally & Barry
A-24*	Zakos, Sharon & Dave
A-25*	Brown, Valerie & Dave
A-26*	Rimmer, Patsy
A-27*	Hefferman, Linda
A-31*	Kessler, Carole & Ron
A-34*	Stephenson, Bonnie & Lloyd
A-35*	Smith, Terri / Radix, Jacob
A-36*	Stevens, Marilyn & Bill
A-37*	Billings, Donna & Karl
A-38*	Thorn, Wendy
A-39*	Williams, Alicia & Craig
A-40*	Pama, Jeff
A-41*	Briggs, Tenika & Mark

B-0*	McManus, Roseanne & Mike
B-1	Seed, Elinor & Bob
B-7*	Fuhrman, Cathy & Glen
B-12	Topping, Shannon
B-13	Earle, Phalon & Ethan
B-14	Sokolowski, Amy & Jason
B-15	Pringle, Marilyn & Tom
B-17*	Ronan, Wendy & Gary
B-18*	McConnell, Brenda
B-19*	Seward, Kailee & Travis
B-23*	Closed

C-1*	Pearson, Lester
C-2*	Forgues, Denis/Reath, Marilyn
C-3*	Winters, Peggy & Larry
C-4*	Primeau, Trudy & Willie



Site	Site Holder
------	-------------

D-1*	Hammond, Sharlene & Andy
D-2*	Phillips, Jennifer / Perkins, Jason
D-3*	Mellon, Melinda
D-4*	Clarke, Brenda & Kevin
D-5*	Ronan, Cary / Holmes, Dereck
D-6*	Burton, Alisha & Jordan
D-7*	Halladay, Sharon & Jeff
D-8*	Robinson, Jane

E-1*	Graham, Cassie & Scott
E-2*	Zakos, Amanda & Cory
E-4*	Halladay, Julie & Brandon
E-5*	Kouk, Christine & Matt
E-6*	McEwen, Laraine / Perkins, Doug
E-7*	Halladay, Ruth & Darrell
E-8*	Merkley, Anne & Darryl

F-1*	Twa, Elaine & Norman
F-2*	Waldorffe, Nancy / Marcellus, Bert
F-13*	McDonald, Debbie & James
F-14*	Contant, Donna

G-1*	Harper, Candace/Scott, Ryan
G-2*	Fischer, Nancy / Currie, Robert
G-3*	Wiltsie, Mary & Jim
G-4*	McFayden, Heather & Jeff
G-5*	Pelkey, Patrick
G-6*	Dickson, Cathy / Hutt, Rob
G-7*	Hutt, Judy & Jeff
G-8*	Dancy, Anne Marie & Ted
G-9*	Garrett, Judy
G-10*	Adams, Marylyn
G-11*	Foster, Bonnie & Mark
G-12*	DeVries, Brenda & Bob
G-13*	Twa, Carrie & Patfield, Brad
G-14*	Dagg, Marilyn & Brian
G-15*	Beauregard, Julie / Cairnes, Ed
G-16*	Rathwell, Janice & Brian
G-17*	Rathwell, Connie & Brent

Site	Site Holder
------	-------------

H-1*	Brooker, Marg & Robert
H-2*	More, Karen & Steve
H-3*	Martell, Deepa & Rob
H-4*	Silver, Cora & Dan
H-5*	MacKinnon, Jennifer
H-6*	Davy, Lillian & Paul
H-7*	Marshall, Laurie/Johnston, Andrew
H-8*	Spicer, Linda
H-9*	DaCosta, Monique & Walter
H-10*	Morley, Joyce & David
H-11*	Simmons, Lori & Clayton
H-12*	Douglas, Shelley / Harris, Glen
H-13*	Gordanier, Laurie
H-14*	McCullough, Jennifer & Paul
H-15*	Burke, Deborah
H-16*	Barton, Pam & Barry
H-17*	Steady, Jenn
H-18*	Dodd, Sandy & Frank
H-19*	Davy, Ann & Bernie
H-20*	Laver, Brittany / Oosterhof, Dave
H-21*	Spicer, Tara & Kevin
H-22*	Kavanaugh, Melanie & Jack

I-1*	Keys, Cindy & Paul
I-2*	Coughlin, Joanne & Gerald
I-3*	Kay, Valery & Gary
I-4*	Wills, Lyn & Bill
I-5*	Van Schie, Nancy & John
I-6*	Lovegrove, Wendy & Tony
I-7*	Irish, Charlene & Dave
I-8*	Kearney, Sharon & Mike
I-9*	Toonders, Brenda & Mike
I-10*	Eves, Linda
I-11*	Haskins, Cathy & Lyn
I-12*	Barrer, Jennifer & Sean
I-13*	Sudds, Marie & Stephen
I-14*	Oosterhof, Joy & Len
I-15*	Shaver, Sharon
I-16*	Markell, Rose & Acil

Site	Site Holder
------	-------------

J-1*	Boileau, Carl
J-2*	Baker, Sharon
J-3*	Johansen, Alexis
J-4*	Perkins, Rhonda & Darrell
J-5*	Johansen, Amanda & Tyler
J-6*	Wright, Michaelann & Eric
J-7*	Woods, Jean
J-9*	Noel, Beverley and Philip
J-10*	Noel, Jake
J-11*	Helmer, Christina & Nigel
J-12*	Morgan, Kelly & Chris
J-13*	Read, Keith
J-18*	James, Jamie & Richard
J-19*	Hurdis, Kathy & Allen
J-25*	Droeske, Brittany & Travis
J-34*	Whitehorn, Ashley & Adam
J-35*	Hornbeck, Danielle & Adrian
J-36*	Evrall, Brenda & Robert
J-37*	Munro, Arlene & Jon
J-40	Mazerolle, Barb & Robert
J-51*	Lake, Debbie
J-52*	Perkins, Angie & Terry

K*	Bateman, Cathy
K-0+	Langdon, Heather & Doug
K-1+	McManus, Kylie & Skylar
K-2+	Goodsell, Laurie
K-3+	Silver-Smith, Donna & Gary
K-4+	Billings, Joann & Nicholas
K-6+	Ethier, Elizabeth / Hurdis, Richard
K-7+	Lovegrove, Taira & Tom
K-11+	Perkins, Susan & Laurence

HSide*	Sly, Stephanie / Curtis, Ryan
Hfnt2*	Bennett, Angela & James
Dock I*	Miller, Stuart
Dock J*	Rose, Olivia
MtcePk*	McNaul, Andrew
M*00	Guthridge, Tina & Mike

IF YOU NEED ASSISTANCE FROM PARK STAFF.....

We Are Ready to



In the event you have any concerns or requests pertaining to your site, please make the request to Gate House Reception Staff. Your request will be recorded in a log and forwarded to the appropriate staff.



Staff are **no longer permitted to move a camper's trailer** due to liability restrictions. If a Seasonal Camper is purchasing a new trailer or trading units, it is their responsibility or that of the trailer company to secure a means of removing the trailer from the site. Please accept our apologies for any inconvenience that this change may cause.

FINAL INSTALLMENT



Just a reminder that the final installment for the 2025 camping season will be processed on Friday, May 9th.

2026 renewal packages will be available for pick-up at the Gate House on August 1st.

GRATITUDE JAR

Despite everything going on in the world today, there is a lot to be grateful for. Gratitude takes time to notice those special things that are often taken for granted, like having a place to live, food to eat, clean water to drink, friends, family, and yes, even computer access. Take a moment to reflect on how fortunate you are when something good happens, regardless of how small or big it may be.

Here's an activity that can be completed with children during the camping season. Each day, have them write down one thing for which they are grateful on squares of paper.



Here are some wording suggestions that can be written on the paper to get started:

- I smile when....
- I am happy when...
- I am grateful for....
- It is a good day when...

At the end of the season, read each one aloud amongst the entire family and you will be amazed at how many great things happened during the summer that no one was expecting. Try making a collage with all the notes as a memento of the summer!

Source: backyardcamp.ca

